

2020 Roadway Rehabilitation Project

Phase 3 Construction Notice – Spot Curb Replacement Area

June 10, 2020

Construction Starts June 22nd	Duration 5 weeks	Description of Work Spot curb street
--	-----------------------------------	---

Anticipated Construction Timeline *(subject to change)*

1. **June 17-19:** Saw-cutting driveways affected by spot curb removal.
2. **June 17-19:** Lowering manhole covers and gate valves.
3. **June 22 - 26:** Concrete curb removal and replacement. Please note that new concrete cannot be driven over until the contractor removes ribbon across driveway (about 5 days after placement). The contractor will not warranty concrete that has been driven on prior to the contractor removing ribbon.
4. **June 26-30:** Asphalt driveway patching.
5. **July 1-3:** Topsoil and seed placement.
6. **July 6-8:** Construction on the trails.
7. **July 9:** Pave the trails.
8. **July 10-15:** Topsoil and restoration for trail improvements.
9. **July 10-16:** Removal of the existing pavement, grading of gravel in preparation for paving.
10. **July 17-20:** Pave first of two layers of pavement. Pavement can be driven on about 30 minutes after placement.
11. **July 21-29:** The contractor will raise existing structures within the street to the final pavement height
12. **July 30-31:** The top layer of pavement will be placed. Pavement can be driven on about 30 minutes after placement.

Protecting your sprinkler systems, invisible fence, and landscaping

If you wish to protect your private features from damage during construction, please temporarily remove them from the City right of way area that will be impacted by construction (about 3-5ft behind the curb marked for removal). Sprinkler heads can be disconnected and the hose can be dug up and pulled back. Spot curb areas will have white areas painted on curb marked for removal. Please protect features within this area. Please protect features behind the entire length of curb in full-curb removal areas.



Any damage to private features in the right of way will not be repaired, replaced, or altered by the city or the contractor.

Street and driveway parking during construction

Parking will be allowed on streets throughout construction between 7:00PM and 7:00AM.

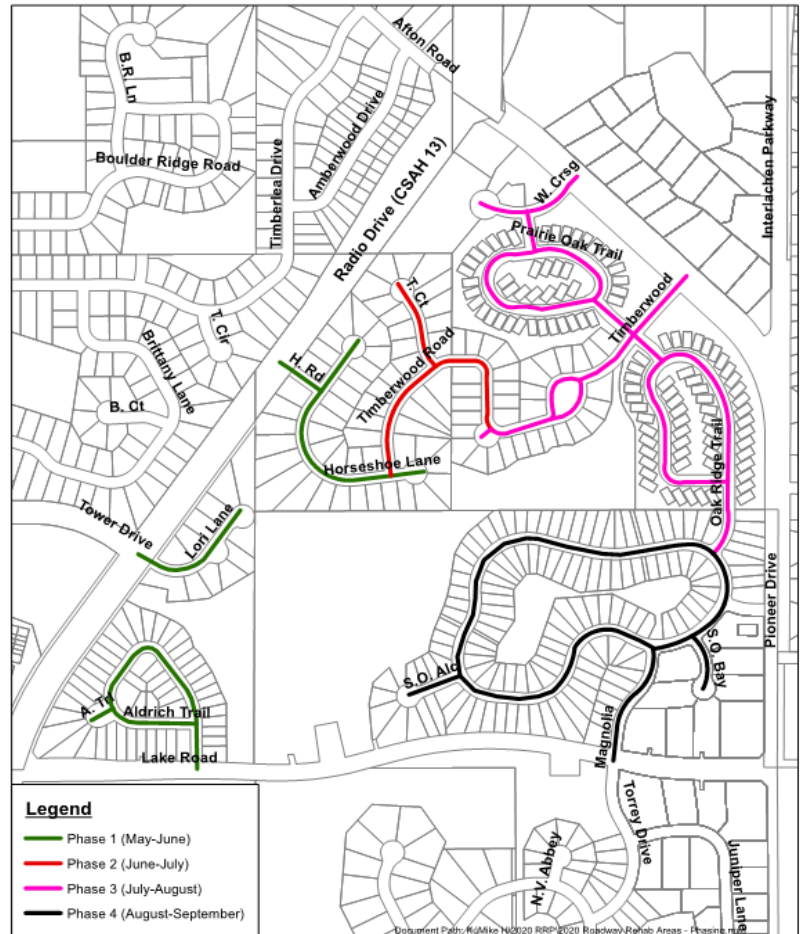
Construction operation	Where to park
Concrete Removal and Placement	<ul style="list-style-type: none"> • Park in your driveway if no curb is marked in front of your driveway or • If curb is marked in front of your driveway park on road where white paint is not present. • <i>If you require special accommodations, please contact the project hotline</i>
Pavement removal Grading and Paving Operations	<ul style="list-style-type: none"> • Park in your driveway. There may be short duration of 30-60 min when removals or paving occurring in front of your home causes temporary loss of access so plan accordingly.

Garbage and mail service

Garbage and Mail service will remain the same with garbage pickup occurring on same day as it currently does throughout construction.

Stay Informed

If you have any questions or concerns, please contact the project hotline or project email. Weekly InTouch email blasts will be sent with project updates. You can sign up for InTouch updates by visiting the city's website at woodburymn.gov/InTouch and selecting the Road Rehabilitation 2020 list.



Hotline
(612) 430-2805



Project Email
woodbury2020@bolton-menk.com



InTouch Updates
Every Week